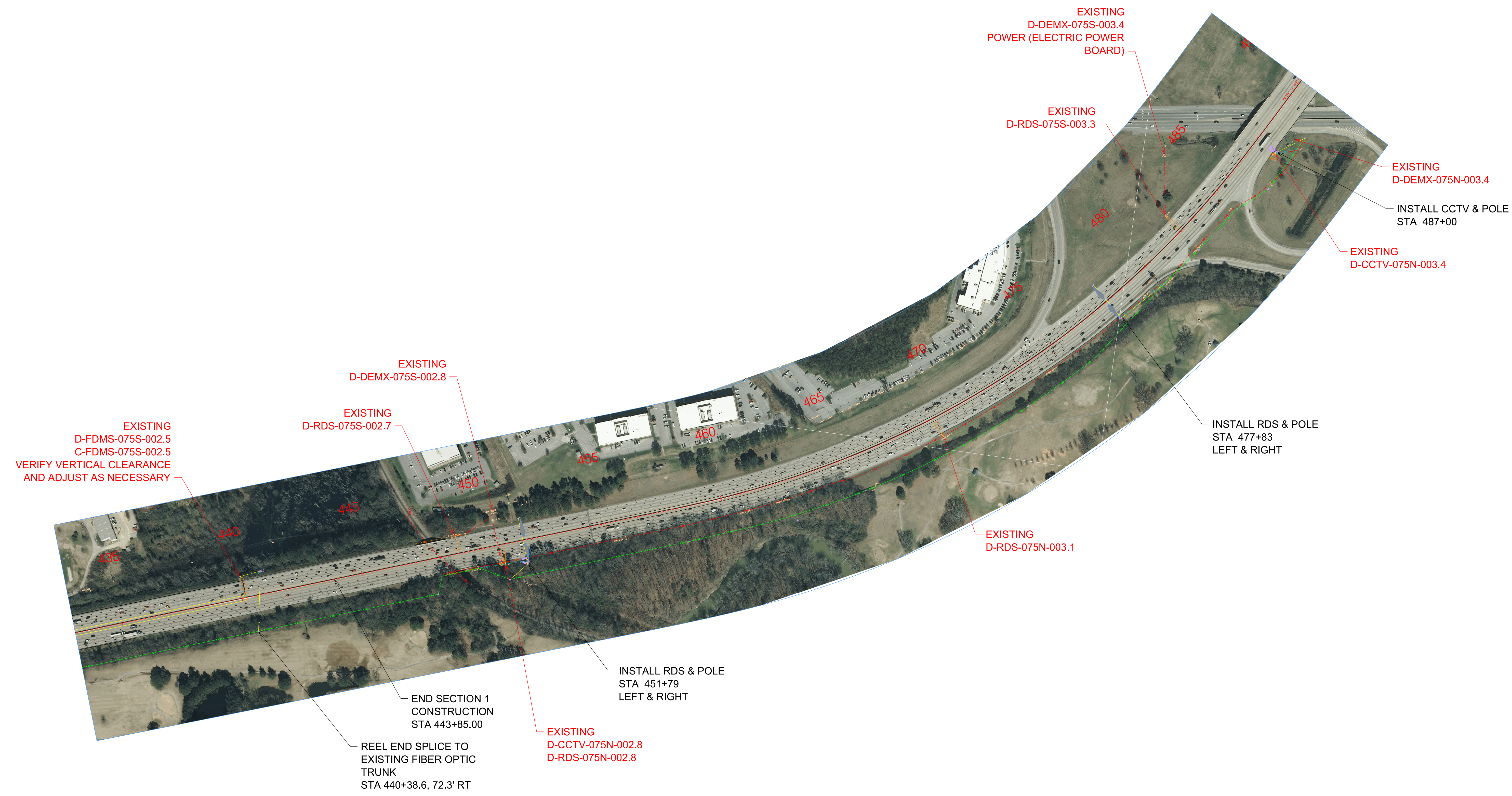
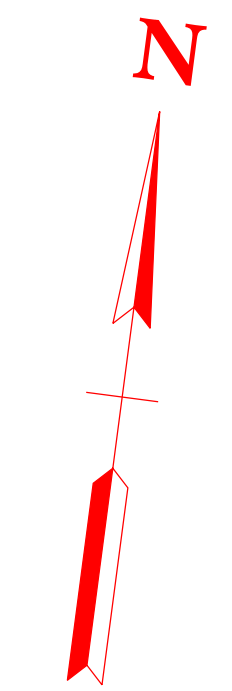


INTERSTATE 75, INTERCHANGE AT INTERSTATE 24

ITS - SECTION 2

STATE PROJ. NO. 33005-1185-44, IM/NH-75-1(131)

HAMILTON COUNTY



ITS SYMBOLS
ALL DEVICE SYMBOLS SHOWN HEREON ARE FOR GRAPHICAL REPRESENTATION ONLY AND ARE NOT TO SCALE. CENTER OF POLE IS INDICATED ON PLANS BY STATION.

STRUCTURE TYPE	LEGEND	
	EXISTING	PROPOSED
F/O TRUNK	F (UG)	F (UG)
CCTV		
RDS		
DMS		



JULY 2022

